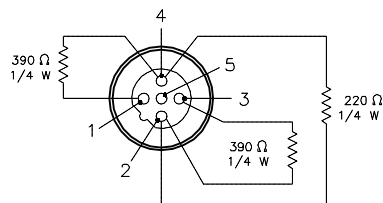
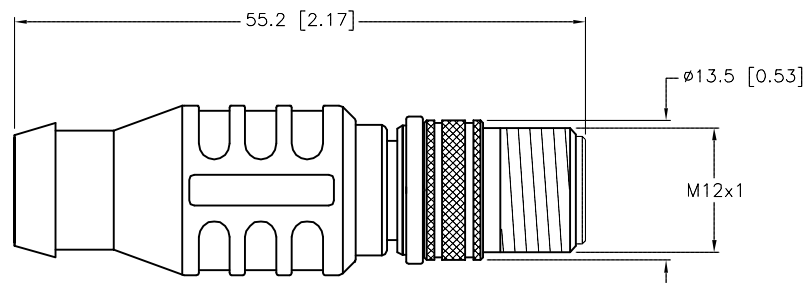


MALE END VIEW

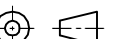



SPECIFICATIONS

| | |
|--------------------------------|---|
| CONTACT CARRIER MATERIAL/COLOR | NYLON OR TPU/BLACK |
| MOLDED HEAD MATERIAL/COLOR | TPU/BLACK |
| CONTACT MATERIAL/PLATING | BRASS/GOLD |
| COUPLING NUT MATERIAL/FINISH | STAINLESS STEEL/PASSIVATED |
| RATED VOLTAGE [V] | 50 V (7.6 VDC MAX. ON PINS WITH RESISTOR) |
| INTERNAL RESISTOR | 220 Ω, 1/4 W AND 390 Ω, 1/4 W |
| PROTECTION CLASS | MEETS IEC IP67 |
| TEMPERATURE RATING | -40°C to +80°C (-40°F to +176°F) |



SOURCE DRAWING - FOR REFERENCE ONLY

| | | | | | | | | | | | |
|----------------------|--|--|--|---|--|--|--|---|--|--|--|
| RELATED DOCUMENTS | | 3RD ANGLE PROJECTION | |  | | THIS DRAWING IS CONFIDENTIAL AND THE PROPERTY OF TURCK INC. USE OF THIS DOCUMENT WITHOUT WRITTEN PERMISSION IS PROHIBITED. | |  | | 3000 CAMPUS DRIVE MINNEAPOLIS, MN 55441 1-800-544-7769 (763) 553-7300 (763) 553-0708 fax www.turck.us | |
| 1. 2. 3. 4. | | | | | | | | | | | |
| MATERIAL | | ALL DIMENSIONS DISPLAYED ON THIS DRAWING ARE FOR REFERENCE ONLY | | DRFT RDS | | DATE 03/27/13 | | DESCRIPTION RSSWV 45-TR2 | | | |
| | | | | APVD T.S. | | SCALE 1=.8 | | | | | |
| FINISH | | CONTACT TURCK FOR MORE INFORMATION | | UNIT OF MEASUREMENT MILLIMETER [INCH] | | | | IDENTIFICATION NO. U2-21435 | | REV A | |
| | | | | DO NOT SCALE THIS DRAWING | | | | FILE: U2-21435 | | SHEET 1 OF 1 | |

| | | | | |
|-----|-----------------|-----|----------|----------|
| A | DRAWING RELEASE | RDS | 04/15/13 | |
| REV | DESCRIPTION | BY | DATE | ECO. NO. |